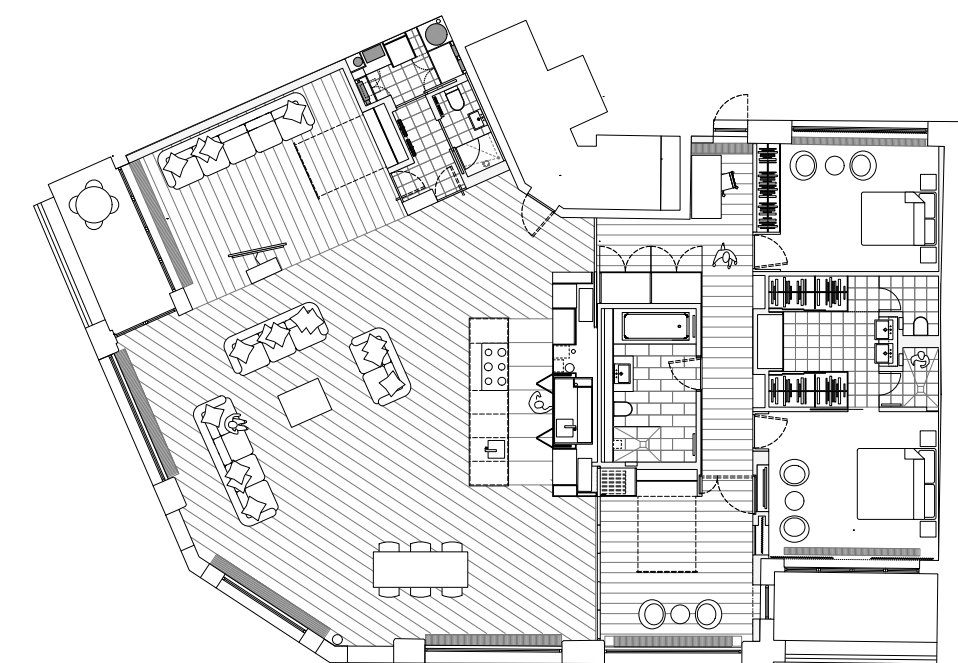


## CLERKENWELL LOFT – ISLINGTON HOME DESIGN

**The transformation of a large apartment with an industrial aesthetic, expressing and celebrating the building's original structure and maximising the amount of effective light throughout.**

The apartment was stripped to its basic shell, exposing the dramatic geometry of its concrete beams. A number of spaces were then “inserted” into this hollow shell in the form of numerous bespoke joinery pieces, enabling the creation of a suitable layout while ensuring that full acoustic separation was achieved. Despite their simple expression, the joinery pieces house a wealth of concealed functions including fold-out beds, integrated radiators, storage units, kitchen appliances, glazed screens, sliding partitions and the entire family bathroom. In the living area, a bespoke island kitchen provides a focal point for activity within a large open plan space.



FLOOR PLAN

COMPLETED: **FEBRUARY 2013** PROJECT COST: **£400,000 (APPROX.)** ARCHITECT: **INSIDE OUT ARCHITECTURE**  
LIGHTING CONTROL ENGINEER: **HARMONIZED SYSTEMS** MAIN CONTRACTOR: **AKC EUROPE LTD** PHOTOGRAPHY BY: **JIM STEPHENSON**