

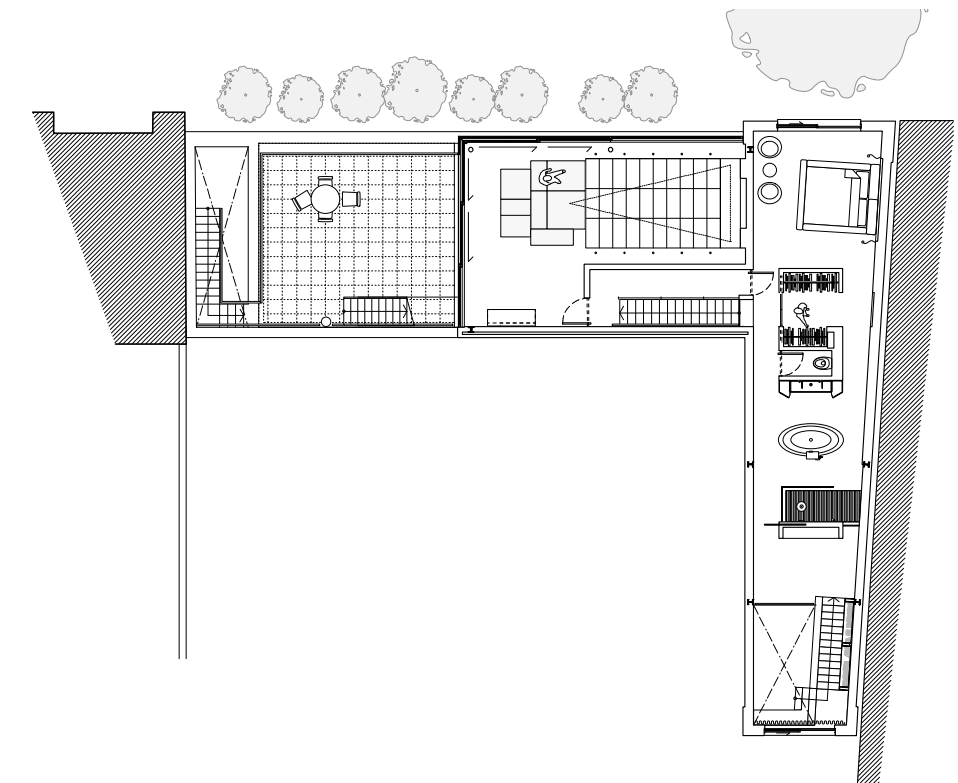


## CINEMATOGRAPHER'S HOUSE AND STUDIO – CAMDEN

### HOME EXTENSION

**A unique house previously created by adding to an industrial building was once again extended and refurbished to add professional working spaces.**

Sited on the edge of Kilburn Grange Park, a series of double-height sliding glazed screens take full advantage of the panoramic landscape, with frameless corners eroding the division between house and park. The revised layout of the house is tailored to the client's specific lifestyle, with a high-spec cinema, a double height library and a renovated warehouse studio complimenting the more traditional domestic spaces. The ancillary spaces are, by contrast, quite tactile and personal. Intimate bathrooms are located within freestanding joinery pods, while the narrowness and subdued lighting of the main staircase helps to create a dramatic sense of arrival as you step into any of the main spaces.



FLOOR PLAN

COMPLETED: **MARCH 2011** PROJECT COST: **£1,100,000 (APPROX.)** ARCHITECTS: **INSIDE OUT ARCHITECTURE**  
STRUCTURAL ENGINEERS: **DOUGLAS KENNEY** MAIN CONTRACTOR: **KAYMAC CONSTRUCTION LTD** PHOTOGRAPHY BY: **ED REEVE**

